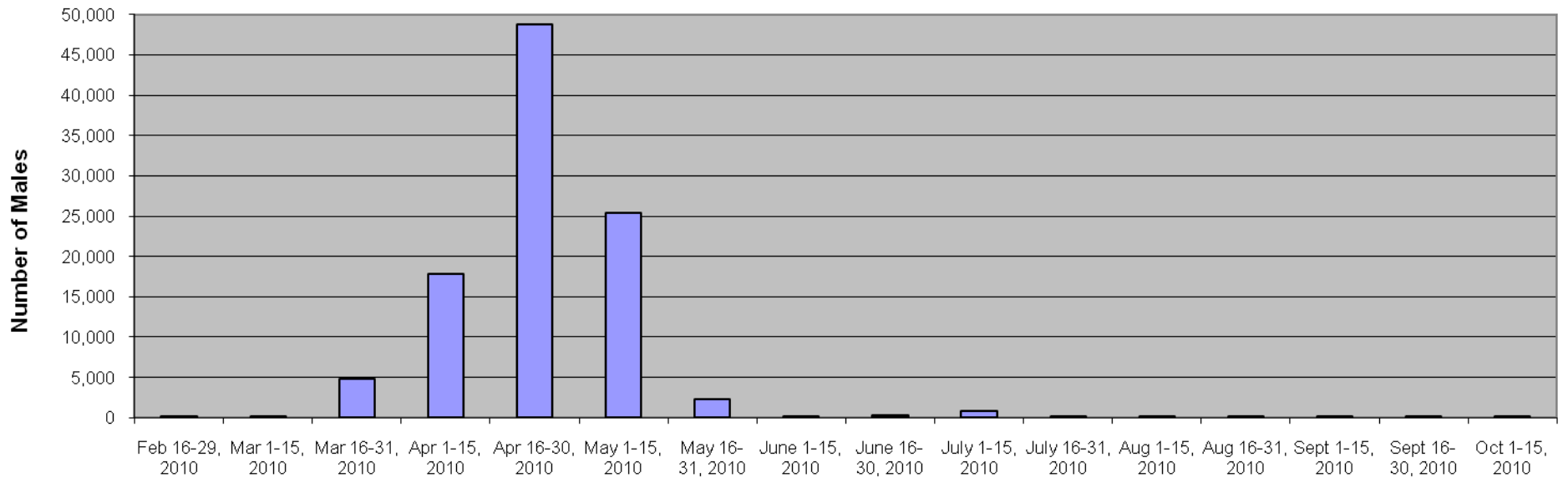
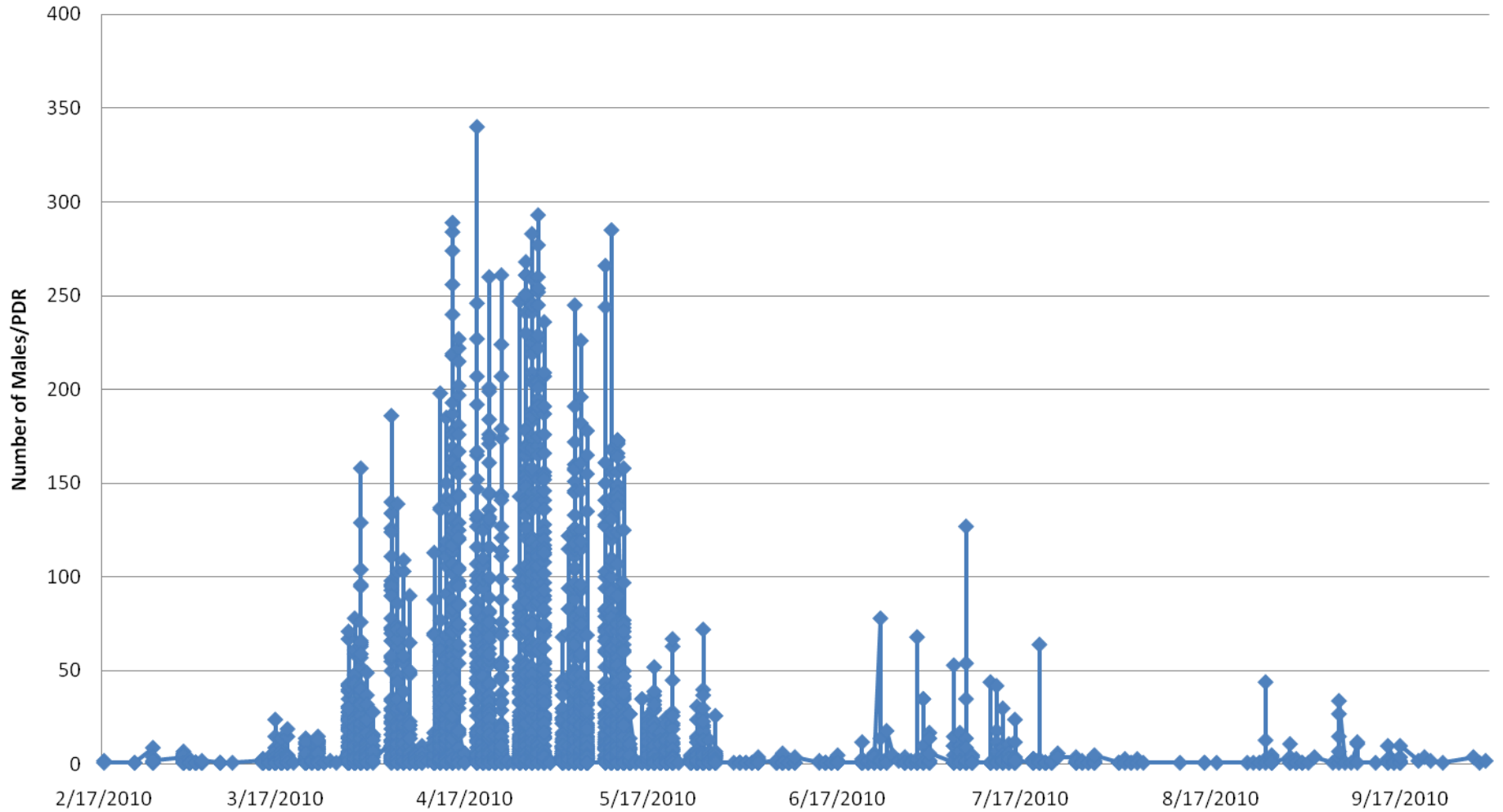


Biweekly European Grapevine Moth Collected 2010 through 10/8/10 in California



Date	# European Grapevine Moth per County										EGVM TOTAL
	Napa	Sonoma	Solano	Mendocino	Fresno	Merced	Monterey	San Joaquin	Santa Cruz	Santa Clara	
Feb 16-29, 2010	23										23
Mar 1-15, 2010	113										113
Mar 16-31, 2010	4,801	1									4,802
Apr 1-15, 2010	17,800	0									17,800
Apr 16-30, 2010	48,807	14	3	13	2						48,839
May 1-15, 2010	25,363	8	4	20	4	4	1				25,404
May 16-31, 2010	2,314	1	1	2							2,318
June 1-15, 2010	45	8			4						57
June 16-30, 2010	289	4	3		1						297
July 1-15, 2010	801	7									808
July 16-31, 2010	182	11									193
Aug 1-15, 2010	12	1						2			15
Aug 16-31, 2010	101	2		1							104
Sept 1-15, 2010	136								1	1	138
Sept 16-30, 2010	36	1								2	39
Oct 1-15, 2010	8	1									9
Total	100,831	59	11	36	11	4	1	2	1	3	100,959

European Grapevine Moth collected 2010 through 10/8/10 in CA



Generation	Period	Total Males	Records
1 st Generation	February 17 – June 10, 2010	99,349 males	(3,406 records)
2 nd Generation	June 11 – August 10, 2010	1,319 males	(251 records)
3 rd Generation	August 11 – October 8, 2010	291 males	(68 records)