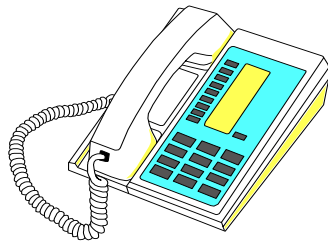


**California Electronic Data Transfer
System (CEDTS) Manual
For
Pest Control Operators and Growers**



**California Environmental Protection Agency
Department of Pesticide Regulation
P.O. Box 4015
Sacramento, CA 95812-4015**

Revised July 2008

**California Environmental Protection Agency
Department of Pesticide Regulation**

Arnold Schwarzenegger, Governor

Alan Lloyd, Secretary
California Environmental Protection Agency

Mary-Ann Warmerdam, Director
Department of Pesticide Regulation

Any portion of this manual may be reproduced for any but profit-making purposes.

This manual is also available on DPR's Web site

www.cdpr.ca.gov/docs/county/dataflex/cedtsspco.pdf

If you have any questions concerning this manual, call (916) 825-8080

Table of Contents

Introduction	1
System Requirements	1
Hardware	1
Software	1
Registration	1
Data Input	2
Key to Tables	2
Width:	2
Required:	2
Data Type:	2
Range Check:	2
Field Definitions for Production Ag Use Reports	3
Header Record	3
Chemical Sub-Record	4
Field Definitions for Production Ag NOI	5
Header Record	5
Chemical Sub-Record	6
Description of Fields in the Production NOI/PUR	7
Header Record	7
Chemical Sub-Record	8
Volatile Organic Compound Field Fumigation Application Method Codes for CEDTS	9
Methyl Bromide Fumigation Methods (with or without chloropicrin)	9
1,3-Dichloropropene Fumigation Methods (with or without chloropicrin)	9
Chloropicrin-Fumigation Methods	10
Metam-Sodium and Metam-Potassium Fumigation Methods	10
Dazomet Fumigation Methods	11
Sodium Tetrathiocarbonate Fumigation Methods	11
Field Definitions for Non-Production Ag Use Reports	12
Header Record	12
Chemical Sub-Record	13
Field definitions for Non-Production Maintenance Gardener and Structural PCO Use Reports	14
Header Record	14
Chemical Sub-Record	15
Description of Fields in the Non-Production Use Reports	16
Header Record	16
Chemical Sub-Record	17
Connecting with the CAC Using the Internet	18
Connecting with the CAC Using a Modem	25
Examples of Error Reports Generated at the CAC Office	29
Example of an Accepted PUR (with no errors)	35
CEDTS Temporary File - Field, Line Order (CDTS BATCH#.PORT#)	36

Introduction

With the implementation of full use reporting in 1990, efforts to streamline and improve the reporting and handling processes were undertaken. This was necessary to address the issues of data accuracy inherent in the old system and increased workload that full reporting placed on industry, the County Agricultural Commissioners (CACs), and the Department of Pesticide Regulation (DPR). As part of this effort to improve the pesticide use reporting system, the California Electronic Data Transfer System (CEDTS) was developed by DPR in cooperation with the University of California and the Kern County Agricultural Commissioner's Office.

The program provides the basis for the transferring notices of intent and pesticide use reports from pest control operators, growers, and others to the county agricultural commissioners' offices as required by regulation by use of modems and local telephone lines. It is anticipated that CEDTS will help in overcoming the problems and costs associated with the increased workload placed on all parties subject to California's full pesticide use reporting program.

There are two systems currently being used by county agricultural commissioners to receive CEDTS data. One system utilizes modems on host systems that are located in the CAC offices and run programs developed by the Merced County Agricultural Commissioner's office that allow secure login and data format verification. The client users can access the host system by using the built-in hyperterminal modem software included with Microsoft Windows products or other telecommunications programs such as ProComm or Crosstalk. The other system is an Internet based system hosted by the Merced County Agricultural Commissioner's Office. The address of the Web based system is ag.co.merced.ca.us/cedts.

System Requirements

Hardware--Users of CEDTS/CDTS are required to have either Internet capability or an error correcting modem for data transfer. This modem must support MNP 5 or higher and be capable of transferring at 19,200 BAUD or higher. Modem communication with a CAC office cannot be established except under MNP or LAPM error correcting protocol. Testing modems for communication may be carried out by contacting the CAC office.

Software--Users are required to have software that will upload raw ASCII data in asynchronous mode with word length of 8, no parity, and 1 stop bit. For unattended transfer of data it will be important that the software support a script system that can interpret system commands as required to "turn capture on and off" or issue commands as required such as a "password" or simple menu choices as requested by the host system.

Registration--All CEDTS/CDTS users will be required to be registered at the CAC office. Users will be required to provide this office with the official name (first and last) and password to be used in logging onto the system. Passwords may be changed by the CEDTS system manager only. It is necessary for the PCO or grower to be officially registered in each CAC office in which they will be submitting NOIs or PURs. It is the responsibility of the registered user to maintain the confidentiality of the user's name and password established with the CAC.

Data Input

The transmission format is shown in the following tables. For each record there are two categories of data. The first category is the header. The second category is the chemical sub-record that represents the products that may be associated with the header record. The number of chemical sub-records is specified in the header record. The beginning of each record starts with a \$\$ on the first line. Each field is on a separate line and will be a carriage return - line feed (CRLF) if there is no data in that field. The chemical information immediately follows on the next line after the last field in the header. The last record in the transmission ends with a \$END\$ on a separate line.

Key to Tables

Width:

This field contains a number representing the maximum width in Characters. Many fields may be shorter than the maximum.

Required:

Y = Required

N = Not Required.

Or some defined condition.

Data Type:

A = Alphabetic ('A' - 'Z') Uppercase only

N = Numeric ('0' - '9')

F = Floating Point ('0' - '9', '+', '.') Only two decimal places allowed except where noted.

D = Date (mmddy)

T = Time (hhmm, 24 hour format)

C = Don't care. (Any printable character)

Range Check:

Numeric Range: For example, 1-10 means the numbers 1 through 10, inclusive.

Character List: Any of the character strings between the commas.

Field Definitions for Production Ag Use Reports

Header Record

Field	Name	Width	Required	Type	Range
0	Leader (\$\$)	2	Y	C	Must be "\$\$"
1	Record Type	1	Y	N	2
2	Transaction Type	1	Y	N	1
3	County Number	2	Y	N	1-58
4	Applicator Type	1	Y	N	1 = Grower, 2 = PCO
5	Applicator ID	11	If Applicator Type=2	C	
6	Record Number	7	Y	N	1-9999999
7	Applied/Supervised By	30	Y	C	
8	Submittee Name	30	N	C	
9	PCA (Advisor) Name	30	N	C	
10	Application Date	6	Y	D	mmddy
11	Application Time	4	Y	T	hhmm 0<= hh <24 0<= mm <60
12	Application Method	5	Y	C	<u>A</u> ir, <u>G</u> round, <u>O</u> ther, see VOC AppMethods for field fumigation codes
13	Permit No/Grower ID	7	Y	C	
14	Customer/Operator Name	30	Y	C	
15	Site ID	8	Y	C	
16	District Number of Field	2	N	C	
17	Section	2	Y	N	
18	Township Number	2	Y	N	
19	Township Dir	1	Y	C	N, S
20	Range Number	2	Y	N	
21	Range Dir	1	Y	C	E, W
22	Base Line Meridian	1	Y	C	H, M, S
23	Commodity EPA Code	6	Y	N	
24	Commodity Qualifier Code	2	Y	N	
25	Planting Sequence	2	N	N	
26	Planting Year	2	N	N	
27	Area/Acres Planted: Amount	9	Y	F	> 0 <= 999,999.99
28	Area/Acres Planted: Units	1	Y	C	A, S, C, K, P, T, U
29	Area/Acres Treated: Amount	9	Y	F	> 0 <= 999,999.99
30	Area/Acres Treated: Units	1	Y	C	A, S, C, K, P, T, U
31	Environmental Changes	60	N	C	
32	Number of Products	2	Y	N	1 - 99

Field Definitions for Production Ag Use Reports

Chemical Sub-Record

Field	Name	Width	Required	Type	Range
1	Null Restricted Flag	1	Y	N	0 = non-restricted 1 = restricted
2	Permit Chemical Code	5	If Null Restricted Flag=1	N	1 - 99999
3	Product Label Name	20	Y	C	
4	Mfg. Firm Reg. Number	7	Y	N	1 - 9999999
5	Label Sequence Number	5	Y	N	1 - 99999
6	Label Revision Code	2	Y	C	
7	Sub Reg. Firm Number	7	Y	N	0 - 9999999
8	Target Pests	20	N	C	
9	Total Product Used: Amount	11	Y	F	> 0 <= 999999.9999
10	Total Product Used: Units	2	Y	C	LB, OZ, PT, QT, GA, GR, KG, ML, LI
11	Usage: Amount of Chemical	6	N	N	0 - 9999
12	Usage: Units	2	N	C	LB, OZ, PT, QT, GA, GR, KG, ML, LI
13	Usage: Rate per Unit	2	N	C	A, S, C, K, P, T, U
14	Dilution Chemical: Amount	4	N	N	0 - 9999
15	Dilution Chemical: Units	2	N	C	LB, OZ, PT, QT, GA, GR, KG, ML, LI
16	Reentry: Time	2	N	N	0 - 99
17	Reentry: Units	1	N	C	H, D
18	Preharvest: Time	2	N	N	0 - 99
19	Preharvest: Units	1	N	C	D, W, M

Field Definitions for Production Ag NOI

Header Record

Field	Name	Width	Required	Type	Range
0	Leader (\$\$)	2	Y	C	Must be "\$\$"
1	Record Type	1	Y	N	2
2	Transaction Type	1	Y	N	1
3	County Number	2	Y	N	1-58
4	Applicator Type	1	Y	N	1 = Grower, 2 = PCO
5	Applicator ID	11	If Applicator Type=2	C	
6	Record Number	7	Y	N	1-9999999
7	Applied/Supervised By	30	Y	C	
8	Submittee Name	30	Y	C	
9	PCA (Advisor) Name	30	N	C	
10	Proposed Application Date	6	Y	D	mmddy
11	Proposed Application Time	4	Y	T	hhmm 0<= hh <24 0<= mm <60
12	Application Method	5	Y	C	<u>Air</u> , <u>Ground</u> , <u>Other</u> , see VOC AppMethods for field fumigation codes
13	Permit No/Grower ID	7	Y	C	
14	Customer/Operator Name	30	Y	C	
15	Site ID	8	Y	C	
16	District Number of Field	2	N	C	
17	Section	2	Y	N	
18	Township Number	2	Y	N	
19	Township Dir	1	Y	C	N, S
20	Range Number	2	Y	N	
21	Range Dir	1	Y	C	E, W
22	Base Line Meridian	1	Y	C	H, M, S
23	Commodity EPA Code	6	Y	N	
24	Commodity Qualifier Code	2	Y	N	
25	Planting Sequence	2	N	N	
26	Planting Year	2	N	N	
27	Area/Acres Planted: Amount	9	Y	F	> 0 <= 999,999.99
28	Area/Acres Planted: Units	1	Y	C	A, S, C, K, P, T, U
29	Area/Acres Treated: Amount	9	Y	F	> 0 <= 999,999.99
30	Area/Acres Treated: Units	1	Y	C	A, S, C, K, P, T, U
31	Environmental Changes	60	N	C	
32	Number of Products	2	Y	N	1 - 99

Field Definitions for Production Ag NOI

Chemical Sub-Record

Field	Name	Width	Required	Type	Range
1	Null Restricted Flag	1	Y	N	0 = non-restricted 1 = restricted
2	Permit Chemical Code	5	If Null Restricted Flag=1	N	1 - 99999
3	Product Label Name	20	Y	C	
4	Mfg. Firm Reg. Number	7	N	N	0 - 9999999
5	Label Sequence Number	5	N	N	0 - 99999
6	Label Revision Code	2	N	C	
7	Sub Reg. Firm Number	7	N	N	0 - 9999999
8	Target Pests	20	Y	C	
9	Total Product Used: Amount	11	N	F	>= 0 <= 999999.9999
10	Total Product Used: Units	2	N	C	LB, OZ, PT, QT, GA, GR, KG, ML, LI
11	Usage: Amount of Chemical	6	Y	N	1 - 9999
12	Usage: Units	2	Y	C	LB, OZ, PT, QT, GA, GR, KG, ML, LI
13	Usage: Rate per Unit	2	Y	C	A, S, C, K, P, T, U
14	Dilution Chemical: Amount	4	Y	N	1 - 9999
15	Dilution Chemical: Units	2	Y	C	LB, OZ, PT, QT, GA, GR, KG, ML, LI
16	Reentry: Time	2	N	N	0 - 99
17	Reentry: Units	1	N	C	H, D
18	Preharvest: Time	2	N	N	0 - 99
19	Preharvest: Units	1	N	C	D, W, M

Description of Fields in the Production NOI/PUR

Header Record

Field	Name	Description
1	Record Type	1 = Notice of Intent 2 = Pesticide Use
2	Transaction Type	1 = New (All reports in CEDTS are new at this time)
3	County Number	County code 1 to 58
4	Applicator Type	1 = Grower 2 = PCO
5	Applicator ID	PCO license number issued by DPR if Field 4 = 2
6	NOI/PUR Record Number	Record number assigned by CAC
7	Applied/Supervised by	Name of person responsible for application
8	Submittee name	Name of person submitting notice
9	PCA (Advisor) name	Name of PCA writing recommendation
10	Application date	Proposed/actual date of application
11	Application time	Time application was completed
12	Application method	<u>A</u> ir, <u>G</u> round, <u>O</u> ther, see VOC AppMethods for field fumigation codes
13	Permit No./Grower ID	CAC assigned number or ID
14	Customer/Operator name	Name of operator
15	Site ID	Unique identification of location
16	District no. of field	District no. if assigned by CAC
17	Section	Section number in which pesticide is applied
18	Township: Part A	Township number
19	Township: Part B	Direction indicator for township
20	Range: Part A	Range Number
21	Range: Part B	Direction indicator for range
22	Base line meridian	Reference origin for Base
23	Commodity code	From CAC commodity code list
24	Commodity qualifier code	From CAC commodity code list
25	Planting Sequence	Sequential number of crop planted for location for planting year
26	Planting Year	Planting sequence year
27	Area/Acres Planted: Amount	Number of area/acres planted
28	Area/Acres Planted: Units	Units for the area/acres planted
29	Area/Acres Treated: Amount	Number of area/acres treated in the area/acres planted
30	Area/Acres Treated: Units	Units for the area/acres treated
31	Environmental changes	Changes in the environment since restricted permit was issued
32	Number of Products	Number of chemicals or the number of chemical sub records to follow, 1 to 99

Description of Fields in the Production NOI/PUR

Chemical Sub-Record

Field	Name	Description
1	Null Restricted Flag	0 = Non restricted material 1 = Restricted material
2	Permit Chemical Code	From CAC chemical code list
3	Product Label Name	Actual product name
4	Mfg. Firm Reg. Number	EPA Firm Registration number or CA Registration number
5	Label Sequence Number	EPA product label number
6	Label Revision Code	Two character revision code
7	Sub Reg. Firm Number	Sub registration number
8	Target pests	Pests targeted as shown on Permit
9	Total Product Used: Amount	Amount of the product used
10	Total Product Used: Units	Units of measure of product used
11	Usage: Amount of Chemical	Amount of the chemical to be used
12	Usage: Unit	Usage units
13	Usage: Rate per Unit	Area of treatment units
14	Dilution Chemical: Amount	Amount of the dilution chemical
15	Dilution Chemical: Units	Units of the dilution chemical used
16	Reentry: Time	Reentry time quantity
17	Reentry Qualifier Code	Reentry time units H = Hours D = Days
18	Preharvest	Preharvest time quantity
19	Preharvest Qualifier Code	Preharvest time units D = Days W = Weeks M = Months

Fields are required (Y), optional (N) or conditional (a description of the condition) as shown in “[Field Definitions for Production Ag Use Reports](#)” and “[Field Definitions for Production Ag NOI](#)”. If required fields are not completed in the data input, an error report is issued to the user and the transmission is not accepted. All alphabetic (A) fields are required to be UPPER CASE. All fields including the floating point fields should be left justified. Decimal points are only required for floating point data (F) where parts of a unit are reported. The smallest unit that can be reported is 0.01 except where noted. Character strings (C) may be any printable character.

Volatile Organic Compound Field Fumigation Application Method Codes for CEDTS

Methyl Bromide Fumigation Methods (with or without chloropicrin)

CEDTS FFM Code	Field Fumigation Method
F1101	Non-tarpaulin/Shallow/Bed
F1102	Non-tarpaulin/Deep/Broadcast
F1103	Tarpaulin/Shallow/Broadcast – Nobel Plow
F1104	Tarpaulin/Shallow/Broadcast – Nobel Plow – Strip
F1105	Tarpaulin/Shallow/Broadcast – Closing shoes and compaction roller
F1106	Tarpaulin/Shallow/Bed
F1107	Tarpaulin/Deep/Broadcast
F1108	Tarpaulin/Deep/Broadcast – Strip
F1109	Drip System - Hot Gas
F1190	Other label method for Methyl Bromide (with or without chloropicrin)

1,3-Dichloropropene Fumigation Methods (with or without chloropicrin)

CEDTS FFM Code	Field Fumigation Method
F1201	Non-tarpaulin/Shallow/Broadcast or Bed
F1202	Tarpaulin/Shallow/Broadcast
F1203	Tarpaulin/Shallow/Bed
F1204	Non-tarpaulin/Shallow/Broadcast /Three Water Treatments
F1205	Tarpaulin/Shallow/Bed/Three Water Treatment
F1206	Non-tarpaulin/Deep/Broadcast or Bed
F1207	Tarpaulin/Deep/Broadcast
F1208	Tarpaulin/Deep/Bed
F1209	Chemigation (Drip System)/Tarpaulin
F1290	Other label method for 1,3-Dichloropropene (with or without chloropicrin)

Volatile Organic Compound Field Fumigation Application Method Codes for CEDTS

Chloropicrin-Fumigation Methods

CEDTS FFM Code	Field Fumigation Method
F1101	Non-tarpaulin/Shallow/Bed
F1102	Non-tarpaulin/Deep/Broadcast
F1103	Tarpaulin/Shallow/Broadcast – Nobel Plow
F1104	Tarpaulin/Shallow/Broadcast – Nobel Plow – Strip
F1105	Tarpaulin/Shallow/Broadcast – Closing shoes and compaction roller
F1106	Tarpaulin/Shallow/Bed
F1107	Tarpaulin/Deep/Broadcast
F1108	Tarpaulin/Deep/Broadcast – Strip
F1109	Drip System - Hot Gas
F1201	Non-tarpaulin/Shallow/Broadcast or Bed
F1202	Tarpaulin/Shallow/Broadcast
F1203	Tarpaulin/Shallow/Bed
F1204	Non-tarpaulin/Shallow/Broadcast /Three Water Treatments
F1205	Tarpaulin/Shallow/Bed/Three Water Treatment
F1206	Non-tarpaulin/Deep/Broadcast or Bed
F1207	Tarpaulin/Deep/Broadcast
F1208	Tarpaulin/Deep/Bed
F1209	Chemigation (Drip System)/Tarpaulin
F1390	Other label method for Chloropicrin

Metam-Sodium and Metam-Potassium Fumigation Methods

CEDTS FFM Code	Field Fumigation Method
F1401	Day Sprinkler/Broadcast or Bed/One Water Treatment
F1402	Day Sprinkler/Broadcast or Bed/Two Water Treatments
F1403	Day Sprinkler/Broadcast or Bed/Three Water Treatments
F1404	Day Non-tarpaulin/Shallow/Broadcast or Bed/One Water Treatment
F1405	Day Non-tarpaulin/Shallow/Broadcast or Bed /Two Water Treatments
F1406	Day Non-tarpaulin/Shallow/Broadcast or Bed/Three Water Treatments
F1407	Day Chemigation (Drip System) Tarpaulin
F1408	Day Chemigation (Drip System) Non-tarpaulin
F1409	Day Rotary Tiller
F1410	Day Power Mulcher
F1411	Day Soil Capping
F1412	Day or Night Flood
F1413	Day Drench
F1452	Night Sprinkler/Broadcast or Bed/Two Water Treatments
F1455	Night Non-tarpaulin/Shallow/Broadcast or Bed/Two Water Treatments
F1490	Other label method for Metam-Sodium and Metam-Potassium

Volatile Organic Compound Field Fumigation Application Method Codes for CEDTS

Dazomet Fumigation Methods

CEDTS FFM Code	Field Fumigation Method
F1501	Day Soil incorporation
F1502	Day Surface application – water incorporation
F1590	Other label method for Dazomet

Sodium Tetrathiocarbonate Fumigation Methods

CEDTS FFM Code	Field Fumigation Method
F1601	Chemigation (Drip)
F1602	Chemigation (mini-sprinkler)
F1603	Chemigation (flood, basin)
F1604	Chemigation (furrow, border)
F1605	Chemigation (foggers, jets, misters, other)
F1690	Other label method for Sodium Tetrathiocarbonate

Field Definitions for Non-Production Ag Use Reports

Field Definitions for Non-Production Ag Use Reports

Header Record

Field	Name	Width	Required	Type	Range
0	Leader (\$\$)	2	Y	C	Must be "\$\$"
1	Record Type	1	Y	N	3 = Non-Prod Ag
2	Transaction Type	1	Y	N	1
3	County Number	2	Y	N	1-58
4	Applicator Type	1	Y	N	1 = Grower, 2 = PCO
5	Applicator ID	11	If Applicator Type=2	C	
6	Record Number	7	Y	N	1-9999999
7	Blank Line	0	Y	C	
8	Submittee Name	30	Y	C	
9	Blank Line	0	Y	C	
10	Application Date	6	Y	D	mmddyy
11	Blank Line	0	Y	C	
12	Blank Line	0	Y	C	
13	Permit No/Grower ID	7	If Applicator Type=1	C	
14	Customer/Operator Name	30	Y	C	
15	Blank Line	0	Y	C	
16	Blank Line	0	Y	C	
17	Blank Line	0	Y	C	
18	Blank Line	0	Y	C	
19	Blank Line	0	Y	C	
20	Blank Line	0	Y	C	
21	Blank Line	0	Y	C	
22	Blank Line	0	Y	C	
23	Blank Line	0	Y	C	
24	Blank Line	0	Y	C	
25	Blank Line	0	Y	C	
26	Blank Line	0	Y	C	
27	Total Applications	6	Y	N	1 - 999999
28	Blank Line	1	Y	C	
29	Blank Line	0	Y	C	
30	Blank Line	0	Y	C	
31	Notes	60	Y	C	
32	Number of Products	2	Y	N	1 - 99

Field Definitions for Non-Production Ag Use Reports

Chemical Sub-Record

Field	Name	Width	Required	Type	Range
1	Null Restricted Flag	1	Y	N	0 = non-restricted 1 = restricted
2	Permit Chemical Code	5	If Null Restricted Flag=1	N	1 – 99999
3	Product Label Name	20	Y	C	
4	Mfg. Firm Reg. Number	7	Y	N	1 – 9999999
5	Label Sequence Number	5	Y	N	1 – 99999
6	Label Revision Code	2	Y	C	
7	Sub Reg. Firm Number	7	Y	N	0 – 9999999
8	Blank Line	0	Y	C	
9	Total Product Used: Amount	11	Y	F	> 0 <= 999999.9999
10	Total Product Used: Units	2	Y	C	LB, OZ, PT, QT, GA, GR, KG, ML, LI
11	Commodity EPA Code	6	Y	N	0 - 9999
12	Commodity Qualifier Code	2	Y	N	0 - 99
13	Area/Acres Treated: Units	1	If Comm. EPA Code > 100	C	A, S, C, K, P, T, U
14	Area/Acres Treated: Amount	9	If Comm. EPA Code > 100	F	0 – 999999.99
15	Blank Line	0	Y	C	
16	Number of Applications	4	Y	N	0 - 9999
17	Blank Line	0	Y	C	
18	Blank Line	0	Y	C	
19	Blank Line	0	Y	C	

Field definitions for Non-Production Maintenance Gardener and Structural PCO Use Reports

Header Record

Field	Name	Width	Required	Type	Range
0	Leader (\$\$)	2	Y	C	Must be "\$\$"
1	Record Type	1	Y	N	4 = Maintenance Gardener and Structural Use
2	Transaction Type	1	Y	N	1
3	County Number	2	Y	N	1-58
4	Applicator Type	1	Y	N	3 = MG, 4 = SPCO
5	Applicator ID	11	Y	C	
6	Record Number	7	Y	N	1-9999999
7	Stamp Number	30	If Applicator Type=4	C	
8	Submittee Name	30	Y	C	
9	Blank Line	0	Y	C	
10	Application Date	6	Y	D	mmddy
11	Blank Line	0	Y	C	
12	Blank Line	0	Y	C	
13	Blank Line	0	Y	C	
14	Customer/Operator Name	30	Y	C	
15	Blank Line	0	Y	C	
16	Blank Line	0	Y	C	
17	Blank Line	0	Y	C	
18	Blank Line	0	Y	C	
19	Blank Line	0	Y	C	
20	Blank Line	0	Y	C	
21	Blank Line	0	Y	C	
22	Blank Line	0	Y	C	
23	Blank Line	0	Y	C	
24	Blank Line	0	Y	C	
25	Blank Line	0	Y	C	
26	Blank Line	0	Y	C	
27	Total Applications	6	Y	N	1 - 999999
28	Blank Line	1	Y	C	
29	Blank Line	0	Y	C	
30	Blank Line	0	Y	C	
31	Notes	60	Y	C	
32	Number of Products	2	Y	N	1 - 99

Field Definitions for Non-Production Maintenance Gardener and Structural PCO Use Reports

Chemical Sub-Record

Field	Name	Width	Required	Type	Range
1	Null Restricted Flag	1	Y	N	0 = non-restricted 1 = restricted
2	Permit Chemical Code	5	If Null Restricted Flag=1	N	1 - 99999
3	Product Label Name	20	Y	C	
4	Mfg. Firm Reg. Number	7	Y	N	1 - 9999999
5	Label Sequence Number	5	Y	N	1 - 99999
6	Label Revision Code	2	Y	C	
7	Sub Reg. Firm Number	7	Y	N	0 - 9999999
8	Blank Line	0	Y	C	
9	Total Product Used: Amount	11	Y	F	> 0 <= 999999.9999
10	Total Product Used: Units	2	Y	C	LB, OZ, PT, QT, GA, GR, KG, ML, LI
11	Commodity EPA Code	6	Y	N	30 if AppType=3 10 if AppType=4
12	Commodity Qualifier Code	2	Y	N	0
13	Blank Line	0		C	
14	Blank Line	0		C	
15	Blank Line	0	Y	C	
16	Number of Applications	4	Y	N	0 - 9999
17	Blank Line	0	Y	C	
18	Blank Line	0	Y	C	
19	Blank Line	0	Y	C	

Description of Fields in the Non-Production Use Reports

Header Record

Field	Name	Description
1	Record Type	3 = Non Production Ag Use Report 4 = Maintenance Gardener/SPCO Use Report
2	Transaction Type	1 = New (All reports in CEDTS are new at this time)
3	County Number	County code 1 to 58
4	Applicator Type	1 = Grower 2 = PCO 3 = Maintenance Gardener 4 = SPCO
5	Applicator ID	PCO license number issued by DPR if Field 4 = 2 SPCO license number issued by DPR if Field 4 = 4
6	NOI/PUR Record Number	Record number assigned by CAC
7	Stamp Number Or Blank	Structural Pest Control Stamp Number if Field 4 = 4 A line with nothing on it otherwise.
8	Submittee name	Name of person submitting notice
9	Blank	A line with nothing on it.
10	Application date	Proposed/actual date of application
11	Blank	A line with nothing on it.
12	Blank	A line with nothing on it.
13	Permit No./Grower ID Or Blank	CAC assigned number or ID if Field 4 = 1 A line with nothing on it otherwise.
14	Customer/Operator name	Name of operator
15	Blank	A line with nothing on it.
16	Blank	A line with nothing on it.
17	Blank	A line with nothing on it.
18	Blank	A line with nothing on it.
19	Blank	A line with nothing on it.
20	Blank	A line with nothing on it.
21	Blank	A line with nothing on it.
22	Blank	A line with nothing on it.
23	Blank	A line with nothing on it.
24	Blank	A line with nothing on it.
25	Blank	A line with nothing on it.
26	Blank	A line with nothing on it.
27	Total Applications	Number for this use report.
28	Blank	A line with nothing on it.
29	Blank	A line with nothing on it.
30	Blank	A line with nothing on it.
31	Notes	Any additional information.
32	Number of Products	Number of chemicals or the number of chemical sub records to follow, 1 to 99

Field Definitions for Non-Production Use Reports

Chemical Sub-Record

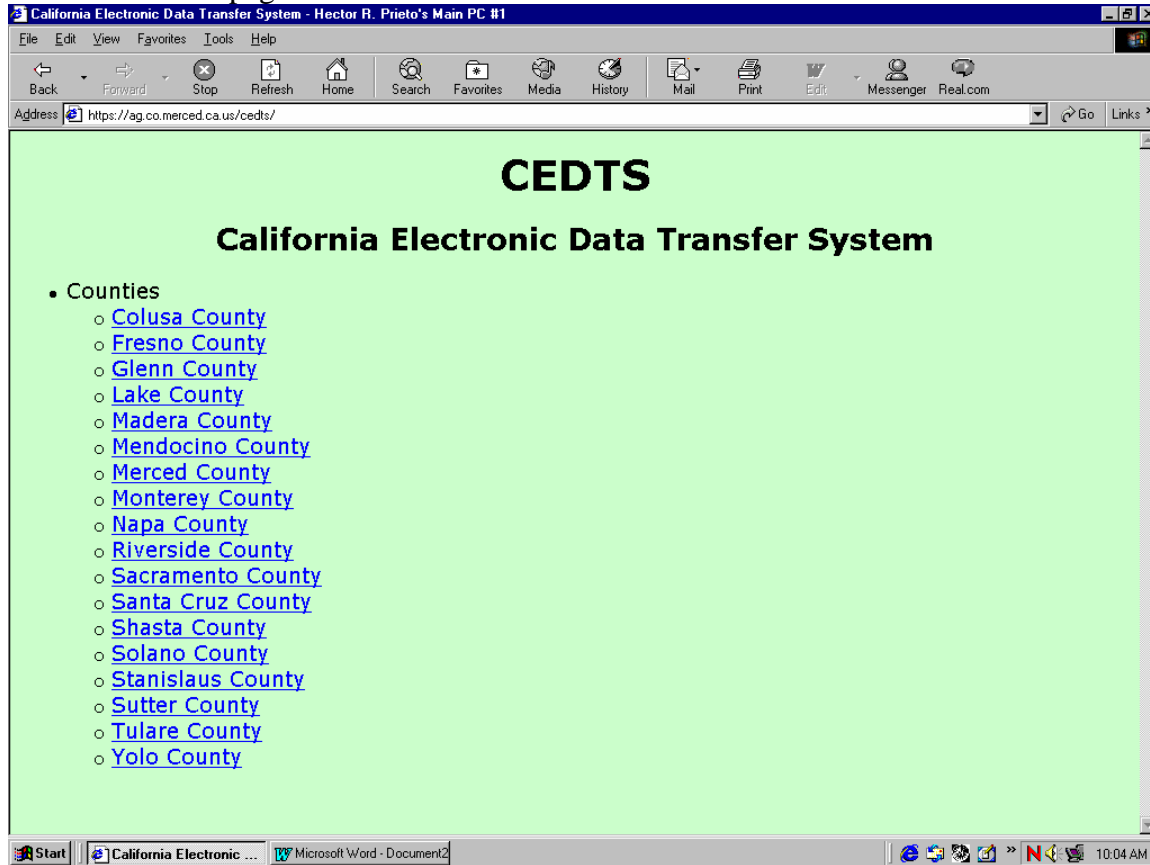
Field	Name	Description
1	Null Restricted Flag	0 = Non restricted material 1 = Restricted material
2	Permit Chemical Code	From CAC chemical code list
3	Product Label Name	Actual product name
4	Mfg. Firm Reg. Number	EPA Firm Registration number or CA Registration number
5	Label Sequence Number	EPA product label number
6	Label Revision Code	Two character revision code
7	Sub Reg. Firm Number	Sub registration number
8	Blank	A line with nothing on it.
9	Total Product Used: Amount	Amount of the product used
10	Total Product Used: Units	Units of measure of product used
11	Commodity EPA Code	Amount of the chemical to be used
12	Commodity Qualifier Code	Usage units
13	Area/Acres Treated: Units Or Blank	Area of treatment units if Field 11 > 100. A line with nothing on it otherwise.
14	Area/Acres Treated: Quantity Or Blank	Amount of the dilution chemical if Field 11 > 100 A line with nothing on it otherwise.
15	Blank	A line with nothing on it.
16	Number of Applications	Reentry time quantity
17	Blank	A line with nothing on it.
18	Blank	A line with nothing on it.
19	Blank	A line with nothing on it.

Fields are required (Y), optional (N) or conditional (a description of the condition) as shown in “[Field Definitions for Non-Production Ag Use Reports](#)” and “[Field Definitions for Non-Production Maintenance Gardener and Structural PCO Use Reports](#)”. If required fields are not completed in the data input, an error report is issued to the user and the transmission is not accepted. All alphabetic (A) fields are required to be UPPER CASE. All fields including the floating point fields should be left justified. Decimal points are only required for floating point data (F) where parts of a unit are reported. The smallest unit that can be reported is 0.01 except where noted. Character strings (C) may be any printable character.

Connecting with the CAC Using the Internet

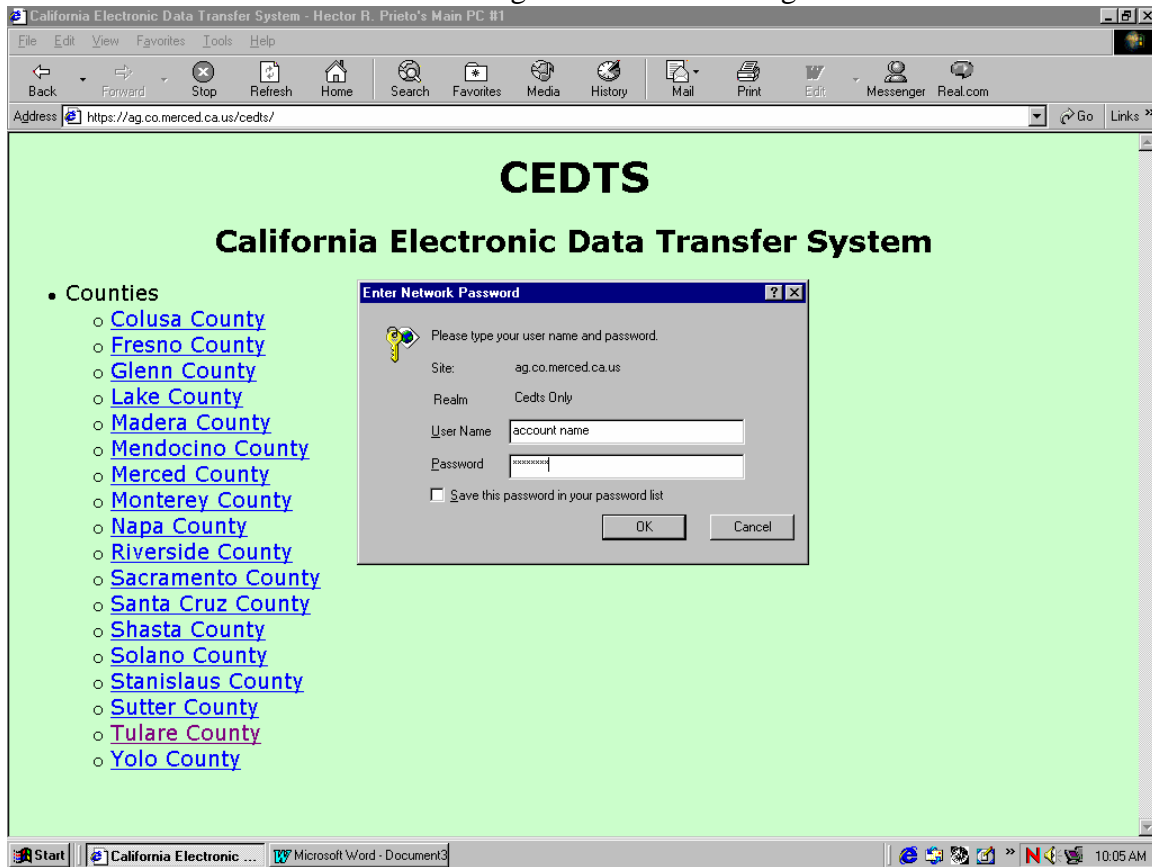
Registered users of CEDTS/CDTS have been provided with the URL (<http://ag.co.merced.ca.us>) which will connect with the host server.

This is the home page:



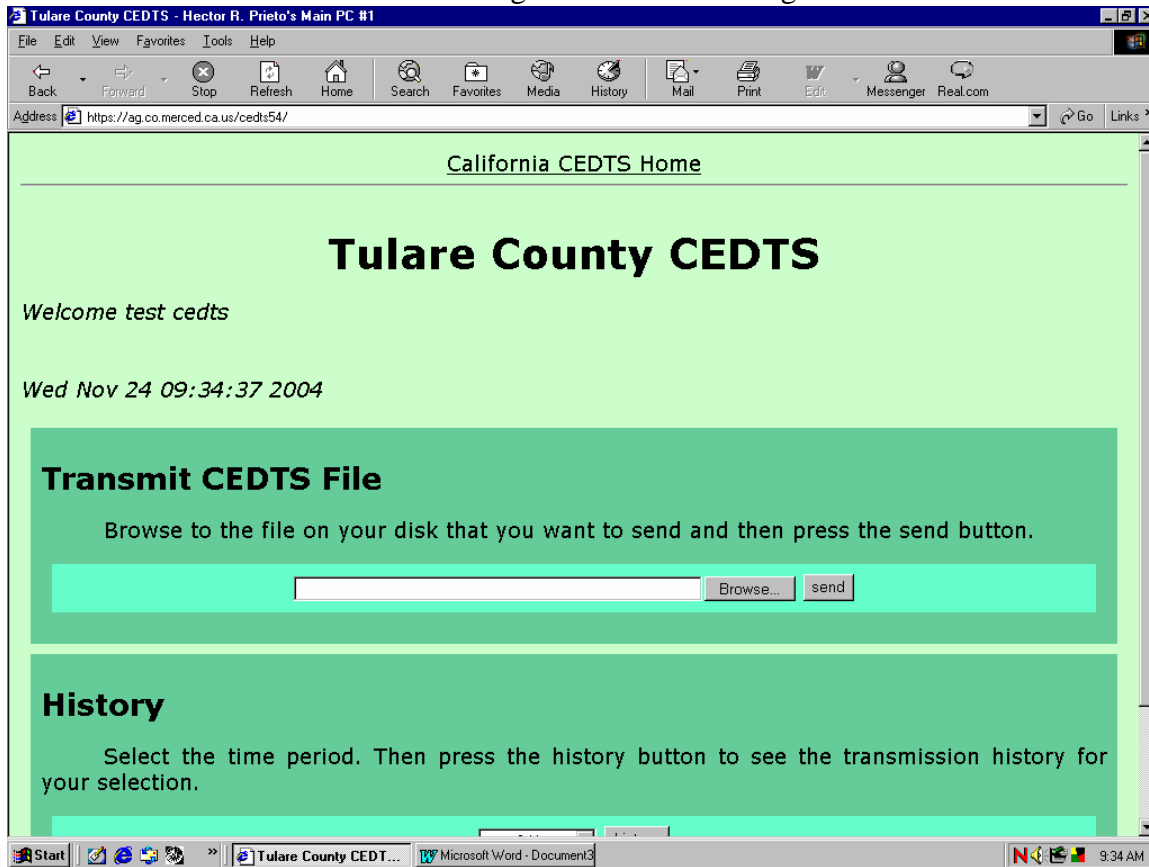
Click on the county that you want to send data.

Connecting with the CAC Using the Internet



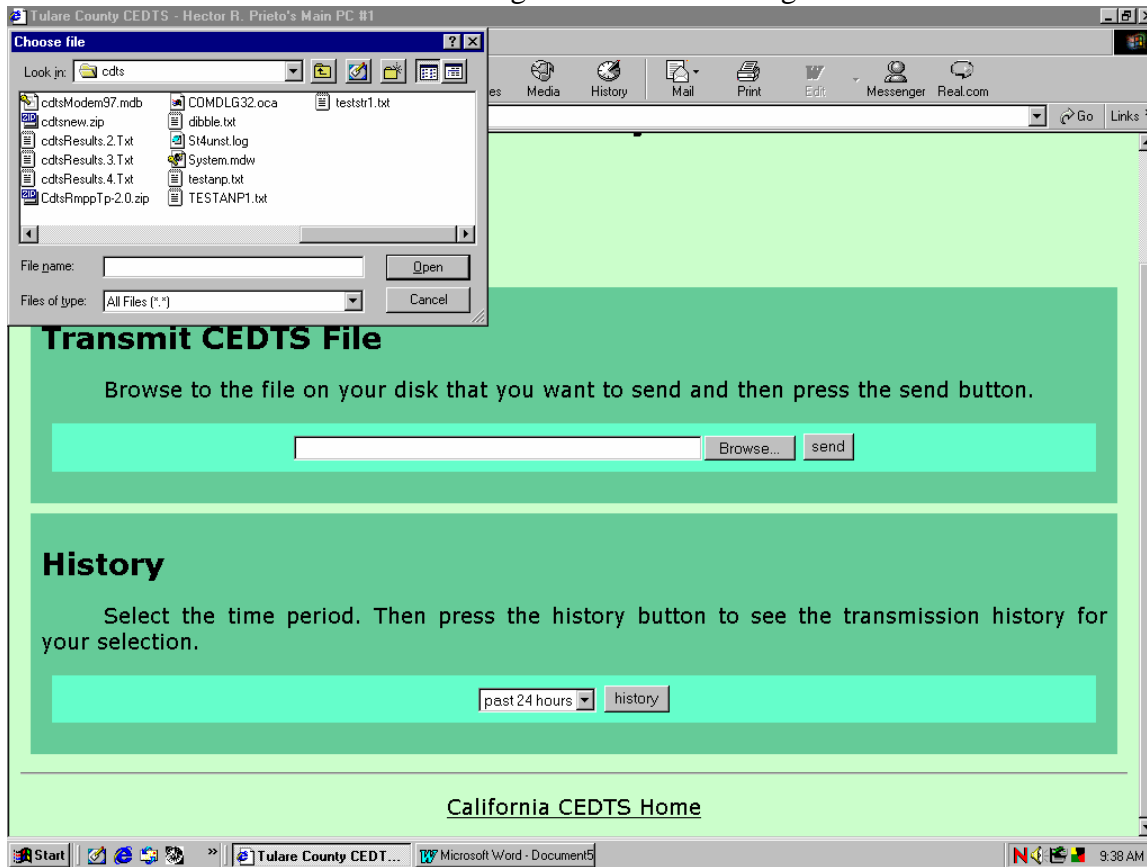
Enter the account name and password assigned to you by the agricultural commissioner.

Connecting with the CAC Using the Internet



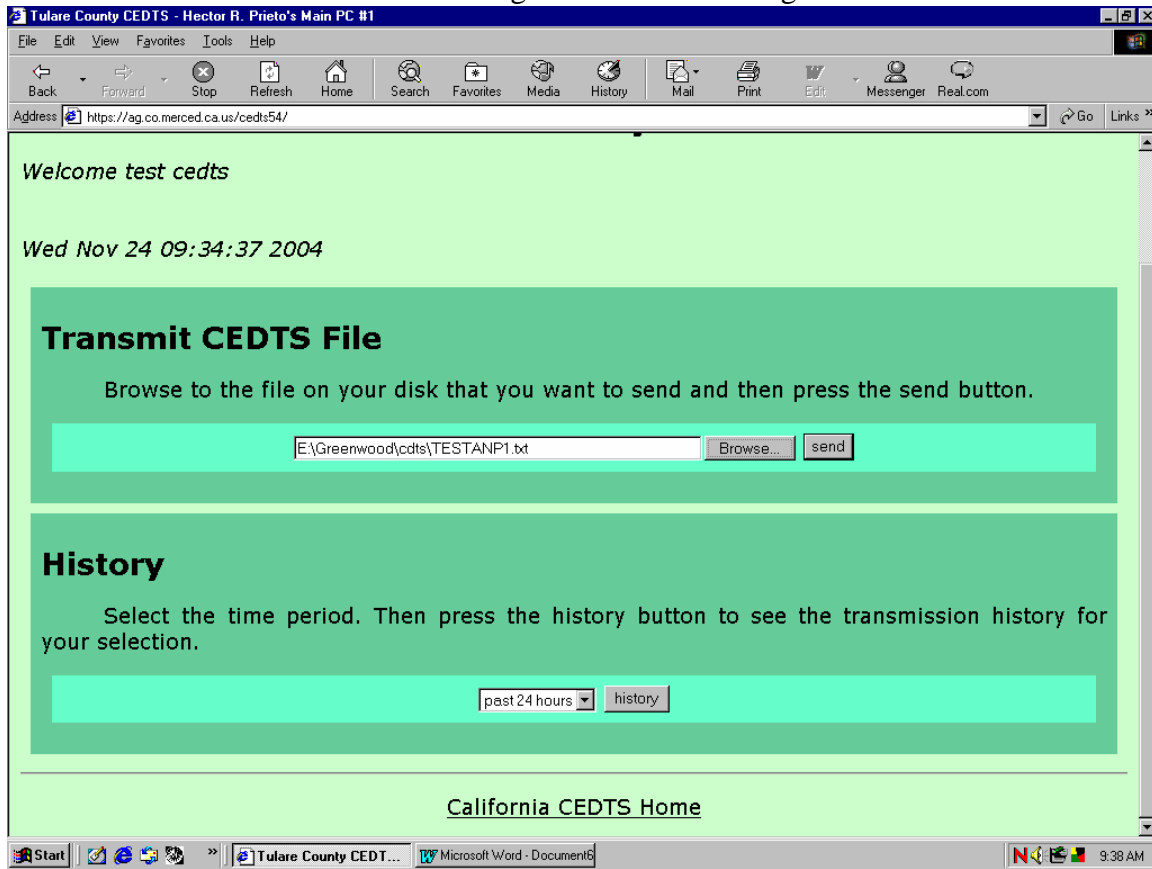
If you have entered your account name and password correctly, you will be at the CEDTS home page. This page allows you to browse for the file created by your pesticide use management software and view the history of your account.

Connecting with the CAC Using the Internet



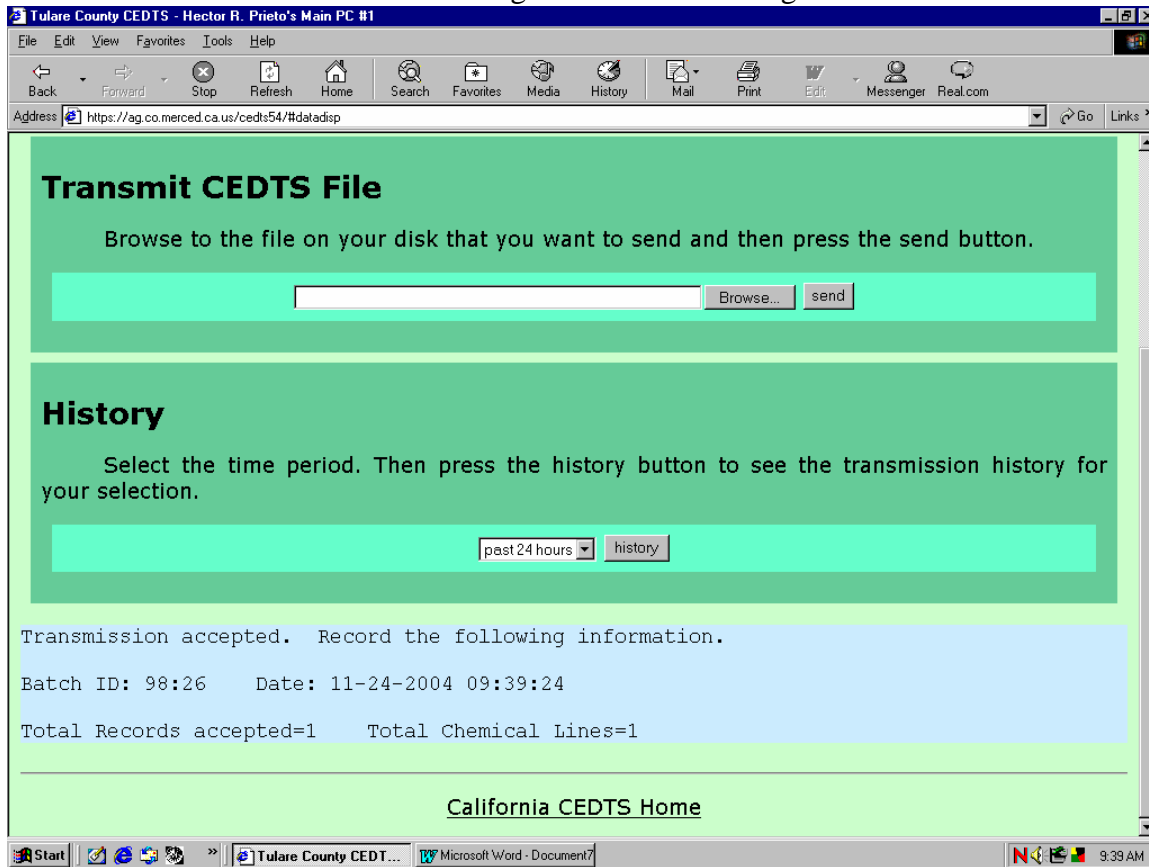
Click on the Browse button and find the file you want to submit. Double click on this file.

Connecting with the CAC Using the Internet



It will place the location and file in the send box. Click on the send button.

Connecting with the CAC Using the Internet



If your data was formatted correctly you will be given the above information – Transmission accepted – Batch ID: _____ Date: _____ and Time: _____.

Record this information to use as verification of submission.

Connecting with the CAC Using the Internet

your selection.

past 24 hours history

REJECTED Record Error Log Number: 98:27

Batch: 98:27 [prev batch](#) | [next batch](#)
Date: 2004-11-24 09:42:07-08
CEDTS User: test cedts
Tranmast Status: not downloaded

error

```
line 11: header record field 10: <--- Application Date is required
line 13: header record field 12: 5405561 <--- This field should be blank
line 14: header record field 13: SETTON PISTACHIO OF TERRA BELLA <--- Permit No/C
line 15: header record field 14: <--- Customer/Operator Name is required
line 26: header record field 25: 8 <--- This field should be blank
line 28: header record field 27: <--- Total Applications are required
line 30: header record field 29: 4 <--- This field should be blank
line 31: header record field 30: 0 <--- This field should be blank
line 33: header record field 32: BAYER TEMPO <--- Number of Products must be at n
line 34: chemical sub record field 1: 3125 <--- Null Restricted Flag must be 0 or
```

[California CEDTS Home](#)

Start | Tulare County CEDT... | Microsoft Word - Documents | 9:42 AM

If there are errors in you data such as a required field missing (application date), you will receive a REJECTED Record Error Log. In this case the missing application date resulted in other data being misread and listing as errors. If you correct the first error, the remaining errors will automatically be fixed.

Connecting with the CAC Using a Modem

Registered users of CEDTS/CDTS have been provided with the telephone number of the CAC office for the appropriate county to receive the transmission. Dialing this number and connection automatically puts them into the login procedure. The login procedure requests their first and last name (alpha numeric characters only - no symbols). The user will see the following message:

```
 /-----\  
 | County Department of Agriculture  
 | CEDTS Program Win98 Version 09/1999  
 | Electronic Pesticide Use and NOI Report Program  
 |  
 | This system is open from 8:30 am - 4 pm Mon-Fri  
 |  
 \-----/
```

Enter your first AND last name =>

Users must enter their first and last name exactly as they were entered at the time of registration in the CAC's office. Should the user make a mistake and enter the wrong names, they will be prompted to enter the information again. Users that are not officially registered with the CAC will not be able to login. Following successful login, the following message will occur on the screen:

```
County NOI/PUR Electronic Data Transfer System  
-----  
  
1. Transmit NOI/PUR  
2. Change Password  
3. Exit  
  
Enter Selection (1-3):1  
Ready to Receive File cdt 822.4.TXT  
ASCII Upload  
Send file now.  
Type $END$ and press Return to terminate
```

The caller now uploads the file now using the transmission format as specified in Table 1. Given a successful transmission the system will proceed to apply the Required, Data Type and Range Check requirements to the data. Error messages will be sent to the caller should any occur in this phase. After detecting the end of the transmission which is the \$END\$ line the following message occurs on the callers screen:

```
Verifying File Format  
Transmission accepted. Record the following information.  
Batch ID: 825 Date: 07/06/01 Time: 11:35  
Total Records accepted=2 Total Chemical Lines=5  
Press any key to continue...
```

Connecting with the CAC Using a Modem

Given that there are no errors in the transmission, the caller will see the message showing the batch number and the indication that the batch number, date and time be recorded. This is his record of the transmission and acceptance at this stage. It is necessary that this latter information be recorded as any reference to the transmission by the CACs office will need to know the batch number and date.

Assuming a successful validation of the transmission, the caller will see the menu indicating a selection of the options to transmit another NOI/PUR, change the password or exit the system. If the caller wishes to exit he would select option 3. This option disconnects the caller from CEDTS.

Error messages are formatted like this:

Line number, Record number, Field number, Field name, Error Type

The "Line number" is the sequential line number in the input file where the error occurred. The "Record number" is the sequential number of the header record in the input file where the error occurred. The "Field number" is the number of the input field. "Field name" is the name of the error field. "Error Type" will be one of the following:

Width error - A field has both a minimum and maximum or a specific number of characters that it can be. If the field is outside of the range or not equal to the specific value you will get a "Width error". If a field is required and is not supplied (i.e. width=0) you will get a "Width error".

Data type conversion - If a field requires a number, date or time and the value that is supplied cannot be converted to the appropriate type then you will get a "Data type conversion" error.

Out of range - Number fields have both a minimum and maximum or a specific value that they can be. If a field value is outside of the range or not equal to the specific value you will get an "Out of range" error.

Decimal point error - If a field is a floating-point type and the value supplied has more than 4 decimals then you will get a "Decimal point error".

Data Value error - If the field an alphabetic and the value supplied is not in the set of acceptable values you will get a "Data Value error". If there is a problem with the "\$\$" record separator and the "\$end\$" end of transmission mark this kind of error will be triggered.

If your transmission **IS** verified then you will receive this message:

```
Transmission accepted. Record the following information.
```

```
Batch ID: Batch_Number      Date: Batch_Date    Time: Batch_Time
      Total Records accepted=TotalRecords    Total Chemical
Lines=TotalChemicals
Press any key to continue...
```

If your transmission is **NOT** verified then you will receive this message:

```
REJECTED
```

```
Record Error Log Number: Batch_Number
Press any key to continue...
```

Connecting with the CAC Using a Modem

If errors occur in the validation, the caller will see on his system the errors described and the basis for the error. Each error is identified by line number and record number. If there are more than 10 errors the validation is stopped and this is noted on the error report that the caller receives. The following message is then sent:

```
Verifying File Format
```

```
LineNumber=5; Record#=0; Field#=4 Applicator Type; out of Range  
LineNumber=95; Record#=1; Field#=4 Applicator Type; out of Range
```

```
REJECTED
```

```
Record Error Log Number: 824  
Press any key to continue...
```

Pressing any key brings the caller back to his original screen for selection of options. The screen displayed following errors in the validation process shows an additional option.

```
Error: Line=XX, Record=XX, Field: (Field name)
```

Following is a list of error messages that may be reported to the user:

```
Missing $END$.  
Premature End of Record  
Expected XX sub-records, found XX.  
More than XX errors.  
Premature End of File  
Expected XX sub-records, found XX.  
Required Field Missing  
-Field too big  
-Bad data type  
-Value must be one of  
-Value must be between ** and **  
  
Transmission master file in use.  
Please try again.
```

A number of examples of errors reported to the user in the validation procedure are shown below. These messages may be captured by the user and used to correct the file before transmission again to the CAC office.

Following are messages that the user will see with a file that has no errors and is accepted followed by messages for files where data did meet the validation criteria.

Transmissions that are accepted by CAC are subsequently processed for errors that cannot be detected in the initial validation of the file. For example, the applicator ID is recorded in the CAC office. If there is an error in recording this number, this will be detected in processing the validated and accepted NOI or PUR. Error reports are prepared by CAC and notification of the person carrying out the submission is made.

Connecting with the CAC Using a Modem

Following are examples of error reports for files that were validated. The error reports show the type of errors that may occur in the user's process of submitting NOIs or PURs which can only be determined in the CAC office. These errors are found during comparison of data submitted in validated transmissions with permit, commodity, chemical and other files in the CAC office.

Examples of Error Reports Generated at the CAC Office

These reports have been generated by the by the RMPP program. If other software is used by the CAC Office then the reports may look different.

NOTICE OF INTENT TO APPLY
RESTRICTED MATERIALS

Page 1

State of California
Department of Pesticide Regulation 277802

County	Sc	Twn	Rng	B&M	App. method	Commodity treated	Applicator I.D. and Name
15	3	26S	24E	M	G	COTTON	GROWER APPLIED

Operator ID	App. Date	App. Time	Treated Amount	Operator Name, transmitted & reference
1500703	02/06/94	1200	37.00 A	ROY & GEORGE FANUCCHI ROY & GEORGE FANUCCHI

Site ID	Conditions	Planted Amount	Applied/Supervised by
41		37.00 A	XX

RM?	Chem #	Product Name	EPA Registration Number	Application Rate
N		TREFLAN S	- - -	5.00 GA\A
N		COMPEX	- - -	5.00 GA\A
Y	4590	PHOSKIL	- - -	1.00 GA\A
	Reference	Chemical Code Name for above chem. code : PARATHION		
Y	99995	CAPTURE	- - -	1.00 GA\A
	Reference	Chemical Code Name for above chem. code : CAPTURE		
**** CHEMICAL CODE NUMBER 99995 HAS NOT BEEN PERMITTED FOR SITE ID 41 ****				

Environmental Changes/Comments
NONE

Submitted by	Batch#	Date	Time	PCA Name
XX	000022	02/05/94	930	XX

Received by	Date	Time	[] Approved
ELECTRONIC TRANSMITTAL	05/03/94	1000	[] Denied

***** ERROR/DISCREPANCY MESSAGE(S) *****

***** R.M. CHEM. CODE NOT PERMITTED FOR THIS SITE ID. - SEE ABOVE LIST *****

Examples of Reports Generated at the CAC Office

NOTICE OF INTENT TO APPLY
RESTRICTED MATERIALS

State of California
Department of Pesticide Regulation

277803

County	Sc	Twn	Rng	B&M	App. method	Commodity treated	Applicator I.D. and Name
15	3	27S	24E	M	G	CORN	02440-00000 ALLEN DANNY K

Operator ID	App. Date	App. Time	Treated Amount	Operator Name, transmitted & reference
1500703	02/06/94	1200	38.00 A	ROY & GEORGE FANUCCHI ROY & GEORGE FANUCCHI

Site ID	Conditions	Planted Amount	Applied/Supervised by
41		38.00 A	XX

RM?	Chem #	Product Name	EPA Registration Number	Application Rate
N		TREFLAN S	0001471-00120-ZA-0000000	5.00 GA\A
		Reference Pesticide Name for above EPA Reg. Number: TREFLAN 5		
N		COMPEX	0045989-50007-AA-0000000	5.00 GA\A
		Reference Pesticide Name for above EPA Reg. Number: COMPEX		

Environmental Changes/Comments
NONE

Submitted by	Batch#	Date	Time	PCA Name
XX	000022	02/05/94	930	XX

Received by	Date	Time	[] Approved
ELECTRONIC TRANSMITTAL	05/03/94	1000	[] Denied

***** ERROR/DISCREPANCY MESSAGE(S) *****

***** COMMODITY CODE DISCREPANCY EXISTS WITH SITE I.D. REFERENCE FILE *****
 NOI/PUR 277803 COMMODITY CODE: 28005- 0 NAME: CORN
 SITE ID 41 COMMODITY CODE: 28007- 0 NAME: COTTON
 ***** DISCREPANCY INVOLVING TREATED ACREAGE IN EXCESS OF PLANTED ACRES *****
 PLANTED AC. ASSIGNED TO REFERENCE SITE I.D. 41 - 37.00 A
 ***** NOI / PUR PLANTED ACREAGE NOT EQUAL TO REFERENCE PLANTED ACREAGE *****
 PLANTED AC. ASSIGNED TO REFERENCE SITE I.D. 41 - 37.00 A
 ***** SECTION, TOWNSHIP, OR RANGE DISCREPANCY WITH SITE I.D. REFERENCE *****
 SITE I.D.: 41 SECTION: 3 TOWNSHIP:26S RANGE: 24E

Examples of Reports Generated at the CAC Office

PESTICIDE USE REPORT

State of California
Department of Pesticide Regulation

277804

County	Sc	TwN	Rng	B&M	App. method	Commodity treated	Applicator I.D. and Name
15	3	26S	24E	M	G	COTTON	GROWER APPLIED

Operator ID	App. Date	App. Time	Treated Amount	Operator Name, transmitted & reference
1500703	02/06/94	1200	37.00 A	ROY & GEORGE FANUCCHI ROY & GEORGE FANUCCHI

Site ID	Conditions	Planted Amount	Applied/Supervised by
41		37.00 A	XX

RM?	Chem #	Product Name	EPA Registration Number	Total Prod. Used
Y	90	ALDRIN 4EC	0001927-00022-AA-0011214	8.00 PT
**** THE ABOVE EPA REGISTRATION NUMBER 0001927-00022-AA-0011214, IS INVALID ****				
Reference Chemical Code Name for above chem. code : ALDRIN				
**** CHEMICAL CODE NUMBER 90 HAS NOT BEEN PERMITTED FOR SITE ID 41 ****				
Y	721	BIDRIN	0000355-00466-AA-0000000	56.00 PT
**** THE ABOVE EPA REGISTRATION NUMBER 0000355-00466-AA-0000000, IS INVALID ****				
Reference Chemical Code Name for above chem. code : BIDRIN				
**** CHEMICAL CODE NUMBER 721 HAS NOT BEEN PERMITTED FOR SITE ID 41 ****				
Y	2591	FMC THIODAN	0000279-02924-ZA-0000000	12.50 GA
Reference Pesticide Name for above EPA Reg. Number: THIODAN 3 EC				
Reference Chemical Code Name for above chem. code : THIODAN				
**** CHEMICAL CODE NUMBER 2591 HAS NOT BEEN PERMITTED FOR SITE ID 41 ****				
N		ROHM HASS CS-7	0000707-50033-AA-0000000	1.00 GA
Reference Pesticide Name for above EPA Reg. Number: TRITON CS-7				

Environmental Changes/Comments
NONE

Submitted by	Batch#	Date	Time	PCA Name
XX	000022	02/05/94	930	XX

Received by	Date	Time	[] Approved
ELECTRONIC TRANSMITTAL	05/03/94	1000	[] Denied

***** R.M. CHEM. CODE NOT PERMITTED FOR THIS SITE ID. - SEE ABOVE LIST *****
 ***** INVALID EPA REG. NUMBER DETECTED - SEE PESTICIDE(S) LISTED ABOVE *****
 ***** INVALID R.M. CHEM. CODE DETECTED - SEE PESTICIDE(S) LISTED ABOVE *****

 THIS P.U.R. NOT APPENDED TO PERMANENT DATABASE DUE TO ABOVE ERRORS/DISCREPANCIES
 - RETURN TO SUBMITTEE FOR CORRECTION AND RESUBMISSION -

Examples of Reports Generated at the CAC Office

PESTICIDE USE REPORT

State of California
Department of Pesticide Regulation

277805

County	Sc	Twn	Rng	B&M	App. method	Commodity treated	Applicator I.D. and Name
15	3	26S	24E	M	G	COTTON	01195-00000 OSBORN AVIATION INC.

Operator ID	App. Date	App. Time	Treated Amount	Operator Name, transmitted & reference
1500703	02/06/94	1200	38.00 A	ROY & GEORGE FANUCCHI ROY & GEORGE FANUCCHI

Site ID	Conditions	Planted Amount	Applied/Supervised by
41		38.00 A	XX

RM?	Chem #	Product Name	EPA Registration Number	Total Prod. Used
N		TREFLAN S	0001471-00120-ZA-0000000	56.00 PT
		Reference Pesticide Name for above EPA Reg. Number: TREFLAN 5		
N		COMPEX	0045989-50007-AA-0000000	8.00 PT
		Reference Pesticide Name for above EPA Reg. Number: COMPEX		
Y	4590	PHOSKIL	0000279-00447-ZA-0000000	33.00 PT
		Reference Pesticide Name for above EPA Reg. Number: PHOSKIL 25 SPRAY		
		Reference Chemical Code Name for above chem. code : PARATHION		

Environmental Changes/Comments
NONE

Submitted by	Batch#	Date	Time	PCA Name
XX	000022	02/05/94	930	XX

Received by	Date	Time	[] Approved
ELECTRONIC TRANSMITTAL	05/03/94	1000	[] Denied

***** ERROR/DISCREPANCY MESSAGE(S) *****

***** DISCREPANCY INVOLVING TREATED ACREAGE IN EXCESS OF PLANTED ACRES *****
 PLANTED AC. ASSIGNED TO REFERENCE SITE I.D. 41 - 36.00 A
 ***** NOI / PUR PLANTED ACREAGE NOT EQUAL TO REFERENCE PLANTED ACREAGE *****
 PLANTED AC. ASSIGNED TO REFERENCE SITE I.D. 41 - 36.00 A

 THIS P.U.R. NOT APPENDED TO PERMANENT DATABASE DUE TO ABOVE ERRORS/DISCREPANCIES
 - RETURN TO SUBMITTEE FOR CORRECTION AND RESUBMISSION -

Examples of Reports Generated at the CAC Office

NOTICE OF INTENT TO APPLY
RESTRICTED MATERIALS

State of California
Department of Pesticide Regulation

666666

County	Sc	Twn	Rng	B&M	App. method	Commodity treated	Applicator I.D. and Name
15	3	26S	24E	M	G	COTTON	04874-00000 SUPER KAT, INC.

Operator ID	App. Date	App. Time	Treated Amount	Operator Name, transmitted & reference
1500704	03/12/94	1200	38.00 A	JIM & GEORGE BRACKEEN * INVALID OPERATOR ID TRANSMITTED *

Site ID	Conditions	Planted Amount	Applied/Supervised by
41		38.00 A	XX

RM?	Chem #	Product Name	EPA Registration Number	Application Rate
N		TREFLAN 5	0001471-00120-ZA-0000000	5.00 GA\A
Reference Pesticide Name for above EPA Reg. Number: TREFLAN 5				

N		COMPEX	0019547-01552-AA-0000000	5.00 GA\A
**** THE ABOVE EPA REGISTRATION NUMBER 0019547-01552-AA-0000000, IS INVALID ****				

Environmental Changes/Comments
NONE

Submitted by	Batch#	Date	Time	PCA Name
XX	000025	03/11/94	1640	XX

Received by	Date	Time	[] Approved
ELECTRONIC TRANSMITTAL	05/03/94	1000	[] Denied

***** ERROR/DISCREPANCY MESSAGE(S) *****

***** THE REST. MAT. PERMIT / OPERATOR IDENTIFICATION ABOVE IS INVALID *****
 ***** THE SITE IDENTIFICATION NUMBER LISTED HAS NO VALID REFERENCE ID. *****
 ***** INVALID EPA REG. NUMBER DETECTED - SEE PESTICIDE(S) LISTED ABOVE *****

Examples of Reports Generated at the CAC Office
PESTICIDE USE REPORT

State of California
Department of Pesticide Regulation

729887

County	Sc	Twn	Rng	B&M	App. method	Commodity treated	Applicator I.D. and Name
15	20	30S	27E	M	A	ALFALFA	01111-00000 APP. REFERENCE NOT FOUND

Operator ID	App. Date	App. Time	Treated Amount	Operator Name, transmitted & reference
1500897	03/09/94	1215	16.00 A	RAY BANDUCCI RAYMOND BANDUCCI FARMS

Site ID	Conditions	Planted Amount	Applied/Supervised by
F2		32.00 A	EDDIE/DAVE

RM?	Chem #	Product Name	EPA Registration Number	Total Prod. Used
Y	1060	FURADAN	0000279-02876-ZC-0000000	2.00 GA
Reference Pesticide Name for above EPA Reg. Number: FURADAN 4F INSECTICIDE				
Reference Chemical Code Name for above chem. code : CARBOFURAN				
N		BUFFER	0005905-50062-AA-0000000	2.00 PT
Reference Pesticide Name for above EPA Reg. Number: HELENA BUFFER P.S.				
Environmental Changes/Comments				

Submitted by	Batch#	Date	Time	PCA Name
C. BETHELL	000024	03/11/94	1450	JOE PIERI

Received by	Date	Time	[] Approved
ELECTRONIC TRANSMITTAL	05/03/94	1000	[] Denied

***** ERROR/DISCREPANCY MESSAGE(S) *****

***** THE PEST CONTROL OPERATOR IDENTIFICATION LISTED ABOVE IS INVALID *****

THIS P.U.R. NOT APPENDED TO PERMANENT DATABASE DUE TO ABOVE ERRORS/DISCREPANCIES
- RETURN TO SUBMITTEE FOR CORRECTION AND RESUBMISSION -

Example of an Accepted PUR (with no errors)

PESTICIDE USE REPORT

Page 1

State of California
Department of Pesticide Regulation

598952

County	Sc	Twn	Rng	B&M	App. method	Commodity treated	Applicator I.D. and Name
15	4	11N	20W	S	A	LETTUCE,HEAD	02089-00000 WHEELER RIDGE AVIATION

Operator ID	App. Date	App. Time	Treated Amount	Operator Name, transmitted & reference
1500158	03/08/94	1215	37.00 A	REYNOLD METTLER & SON R. M. METTLER (METCO)

Site ID	Conditions	Planted Amount	Applied/Supervised by
H3D		37.00 A	BOLES-SMITH

RM?	Chem #	Product Name	EPA Registration Number	Total Prod. Used
Y	2591	FMC THIODAN	0000279-02924-ZA-0000000	12.50 GA
		Reference Pesticide Name for above EPA Reg. Number: THIODAN 3 EC		
		Reference Chemical Code Name for above chem. code : THIODAN		
N		FMC AMMO	0000279-03027-AA-0000000	1.50 GA
		Reference Pesticide Name for above EPA Reg. Number: AMMO 2.5 EC		
N		ROHM HASS CS-7	0000707-50033-AA-0000000	1.00 GA
		Reference Pesticide Name for above EPA Reg. Number: TRITON CS-7		
N		CMR NO FOAM B	1050775-50008-AA-0000000	0.50 GA
		Reference Pesticide Name for above EPA Reg. Number: NO FOAM B		

Environmental Changes/Comments

Submitted by	Batch#	Date	Time	PCA Name
JERRY SMITH	000023	03/10/94	1130	SAMMY JONES

Received by	Date	Time	[] Approved
ELECTRONIC TRANSMITTAL	05/03/94	1000	[] Denied

+++++
THIS PUR PASSED ALL INTEGRITY CHECKS AND WILL BE APPENDED TO PERMANENT DATABASE
+++++

CEDTS Temporary File

CEDTS Temporary File - Field, Line Order (CDTS BATCH#.PORT#)

1	\$\$ -- Beginning of Electronically Transmitted File
2	REC_TYPE -- Record Type -- 1 = NOI, 2 = PUR, 3 = AG NPMSPUR, 4 = STRUCTURAL
3	TRAN_TYPE -- Transaction Type -- 1 = New (All New at This Time)
4	CNTY_NO -- County Number
5	APPL_TYPE -- Applicator Type -- 1 = GROWER, 2 = PCO, 3 = GARDENER, 4 = SPCO
6	APPL_ID -- PCO License Number
7	NOI_PUR -- NOI/PUR Record Number OR Stamp # if APPL_TYPE = 4
8	APPL_BY -- Applied/Supervised By
9	SUB_NAME -- Submitter Name
10	PCA_NAME -- PCA (Advisor) Name
11	APPL_DATE -- Application Date
12	APPL_TIME -- Application Time
13	APPL_METHOD -- Application Method -- A, G, O, and VOC codes
14	PER_NO -- Permit No./Grower ID
15	CUST -- Customer/Operator Name
16	LOC -- Site ID -- Unique Identification of Location
17	DIST_NO -- District Number of Field
18	SECT -- Section
19	TWN_A -- Township: Part A -- Township Number
20	TWN_B -- Township: Part B -- Direction Indicator for Township
21	RANGE_A -- Range: Part A -- Range Number
22	RANGE_B -- Range: Part B -- Direction Indicator for Range
23	BASE_MER -- Base Line Meridian
24	COMM_CODE -- Commodity Code
25	SITE_CODE -- Commodity Qualified Code
26	PLANT_NO -- Planting Sequence
27	PLANT_YEAR -- Planting Year or TOTAL Applications if APPL_TYPE=3 or 4
28	PLANT_AMT -- Area/Acres Planted: Amount
29	PLANT_U -- Area/Acres Planted: Units
30	TREAT_AMT -- Area/Acres Treated: Amount
31	TREAT_U -- Area/Acres Treated: Units
32	ENVIR -- Environmental Changes
33	PROC_NO -- Number of Products -- Number of Chemical Sub-records to Follow
	End of Master Record

CEDTS Temporary File

	Start of Sub-Chemical Records
34	FLAG -- Null Restricted Flag -- 0 = Non-restricted, 1 = Restricted Material
35	CHEM_CODE -- Permit Chemical Code
36	LABEL_NAME -- Product Label Name
37	EPA_NO -- Mfg. Firm Reg. Number -- Firm Number
38	LABEL_NO -- Label Sequence Number
39	LABEL-CODE -- Label Revision Code -- Two-Character Revision Code
40	CA_NO -- Sub Reg. Firm Number -- Sub-registration Number
41	TARGET -- Target Pests
42	AMT_USE -- Total Product Used: Amount
43	UNIT_USE -- Total Product Used: Units
44	AMT_CHEM -- Usage: Amount of Chemical -- To Be Used
45	UNITS -- Usage: Units -- Type of Units
46	UNIT_RATE -- Usage: Rate Per Unit
47	DIL_CHEM -- Dilution Chemical: Amount
48	DIL_UNIT -- Dilution Chemical: Units
49	REENTRY -- Reentry: Time -- Number of Hours or Days
50	R_CODE -- Reentry Qualifier code -- <u>H</u> ours, <u>D</u> ays
51	PREHRVST -- Preharvest Time -- Number of Days, Weeks or Months before harvest
52	P_CODE -- Preharvest Qualifier Code -- <u>D</u> ays, <u>W</u> eeks or <u>M</u> onths
53	\$END\$ -- Additional Sub-Chemical Records Would Continue Here or Start a New Master Record